



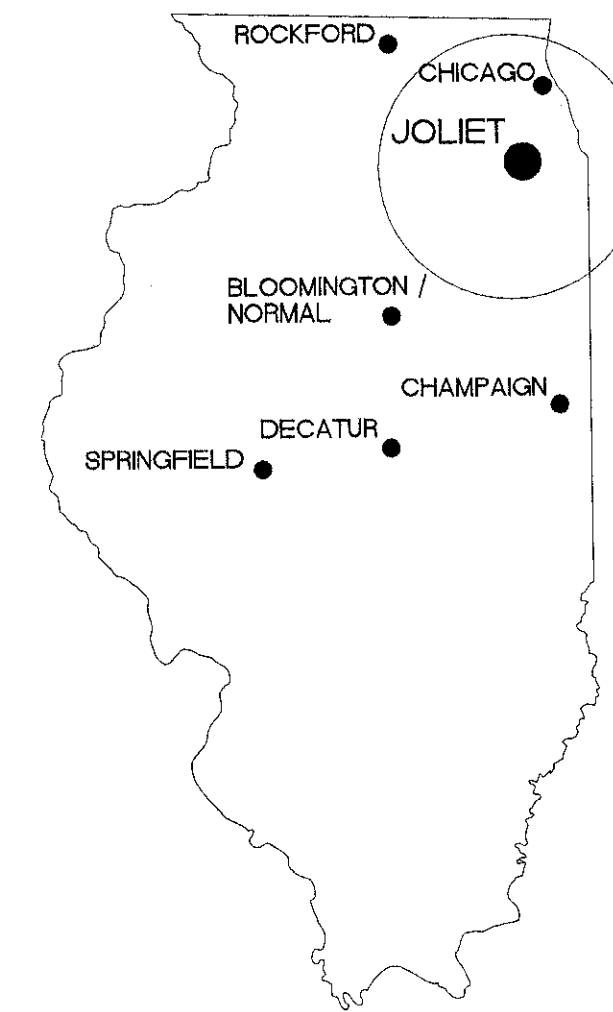
# PARKING LOT PEDESTRIAN BRIDGE

JOLIET JUNIOR COLLEGE  
ILLINOIS COMMUNITY COLLEGE DISTRICT 525  
JOLIET, ILLINOIS

MARCH 1, 2005

BLDD Architects, Inc.

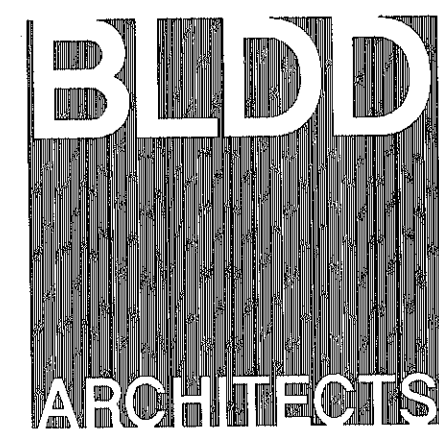
Design  
Firm  
Registration  
#184-000723



## DRAWING INDEX

C-101	SITE PLAN
A-101	PLAN AND ELEVATION
A-201	ENLARGED BRIDGE PLANS, SECTIONS AND DETAILS
A-202	DETAILS

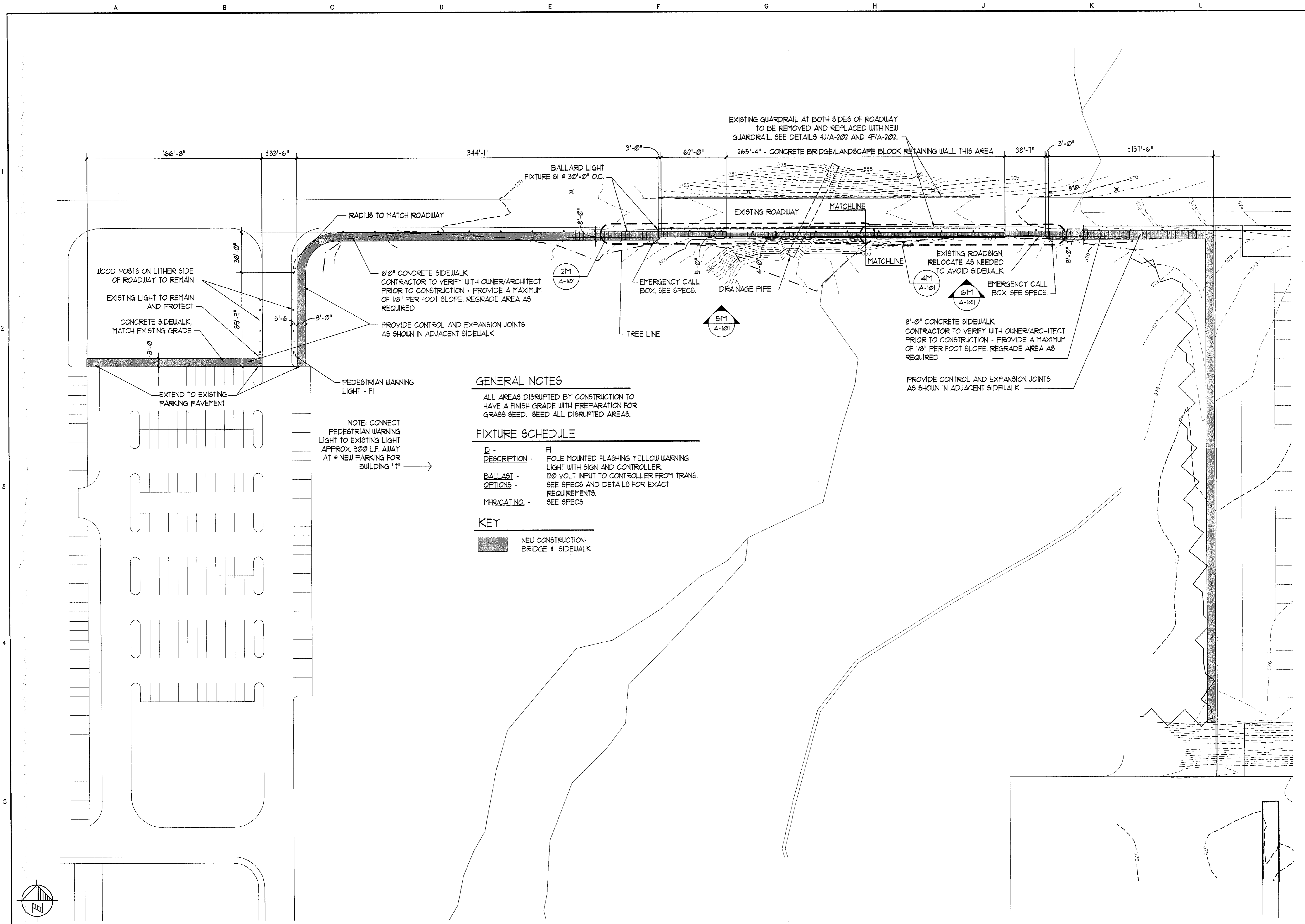
### ARCHITECT



BLDD Architects, Inc.  
115 W. Jefferson St. Suite 103  
Bloomington, Illinois, 61701  
(309) 828-5025 • fax (309) 828-5127

SET NO.

2



date 03/01/05  
 revised

drawn by AMF/MRD  
 checked by RCD



**ARCHITECTS**

BLDD Architects, Inc.  
 115 W. Jefferson, Suite 103  
 Bloomington, Illinois 61701  
 Phone: 309-828-5025  
 Fax: 309-828-5127

Design Firm  
 Registration  
 #184-000723

COPYRIGHT © 2002 BY BLDD ARCHITECTS, INC.  
 All rights reserved. No part of this document may be reproduced, translated or in any form or by any means, electronic or mechanical, including photocopying, recording or by any information storage and retrieval system, without the written permission of the author or their respective publisher.

**SITE PLAN - PEDESTRIAN BRIDGE**  
**JOLIET JUNIOR COLLEGE**  
**JOLIET, IL**

sheet

**C-101**

project 042030.400

**GENERAL NOTES**

ALL AREAS DISRUPTED BY CONSTRUCTION TO HAVE A FINISH GRADE WITH PREPARATION FOR GRASS SEED. SEED ALL DISRUPTED AREAS.

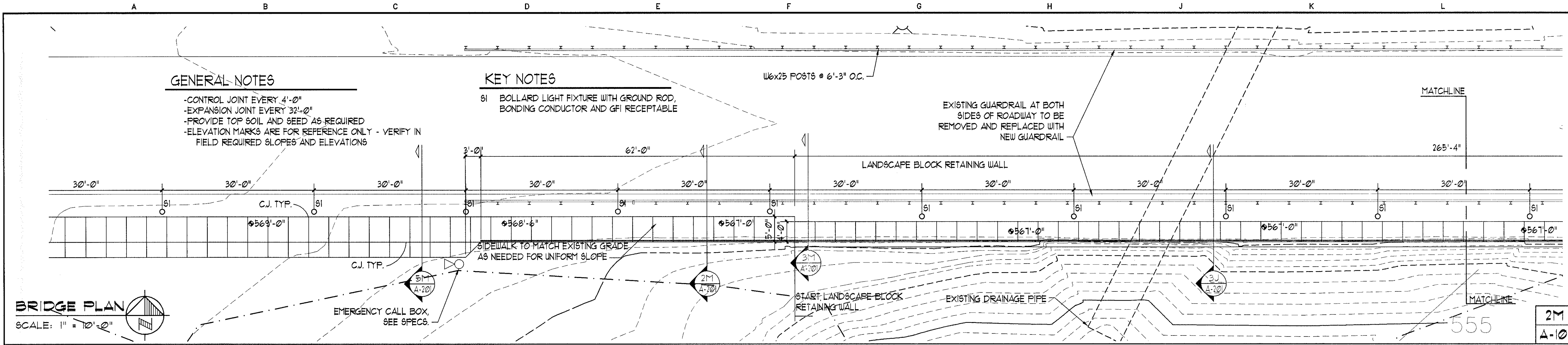
**FIXTURE SCHEDULE**

ID -	FI
DESCRIPTION -	POLE MOUNTED FLASHING YELLOW WARNING LIGHT WITH SIGN AND CONTROLLER
BALLAST -	120 VOLT INPUT TO CONTROLLER FROM TRANS.
OPTIONS -	SEE SPECS AND DETAILS FOR EXACT REQUIREMENTS.
MFG/CAT NO. -	SEE SPECS

**KEY**

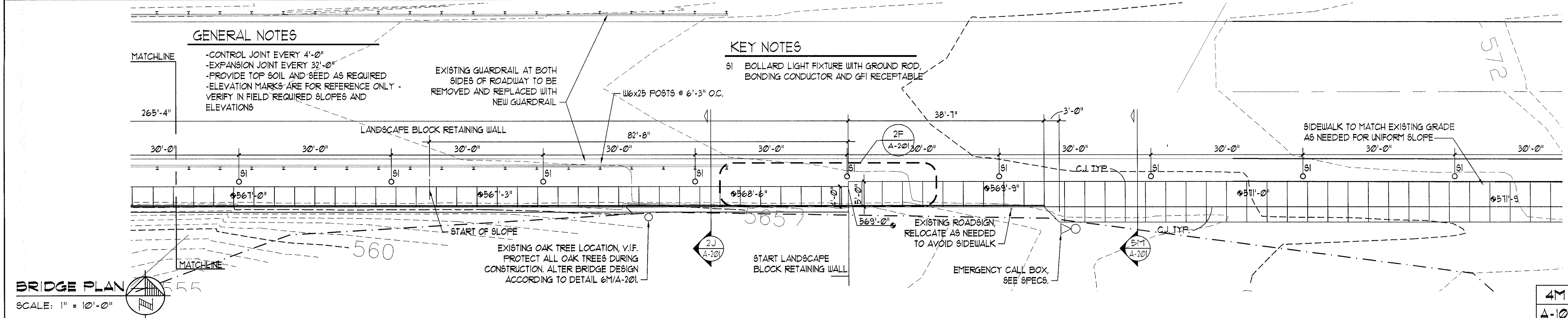
NEW CONSTRUCTION: BRIDGE & SIDEWALK

**SITE PLAN**  
 SCALE: 1" = 40'-0"



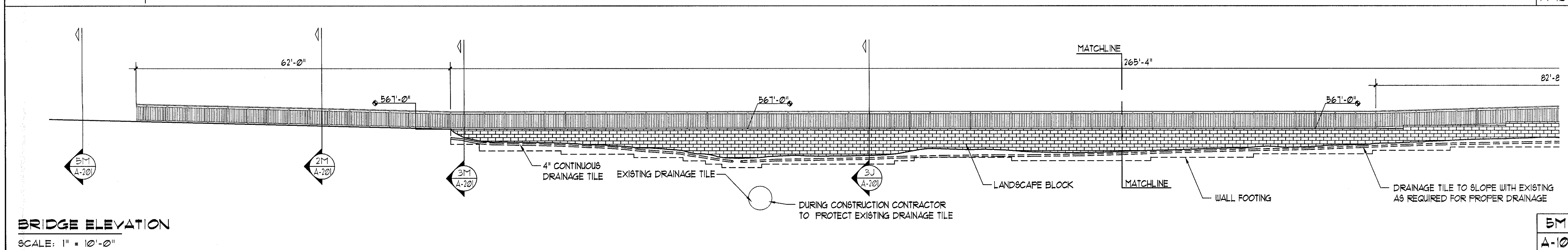
**BRIDGE PLAN**  
SCALE: 1" = 10'-0"

2M  
A-101



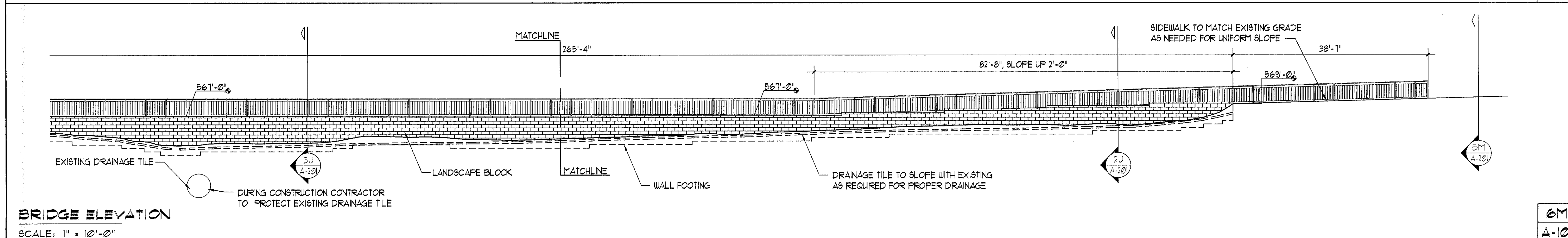
**BRIDGE PLAN**  
SCALE: 1" = 10'-0"

4M  
A-101



**BRIDGE ELEVATION**  
SCALE: 1" = 10'-0"

5M  
A-101



**BRIDGE ELEVATION**  
SCALE: 1" = 10'-0"

6M  
A-101

date 03/01/2005  
revised

drawn by AMP/MRD  
checked by RCD



**ARCHITECTS**

BLDD Architects, Inc.  
115 W. Jefferson, Suite 103  
Bloomington, Illinois 61701  
Phone: 309-828-5025  
Fax: 309-828-5127

Design Firm  
Registration  
#184-000728

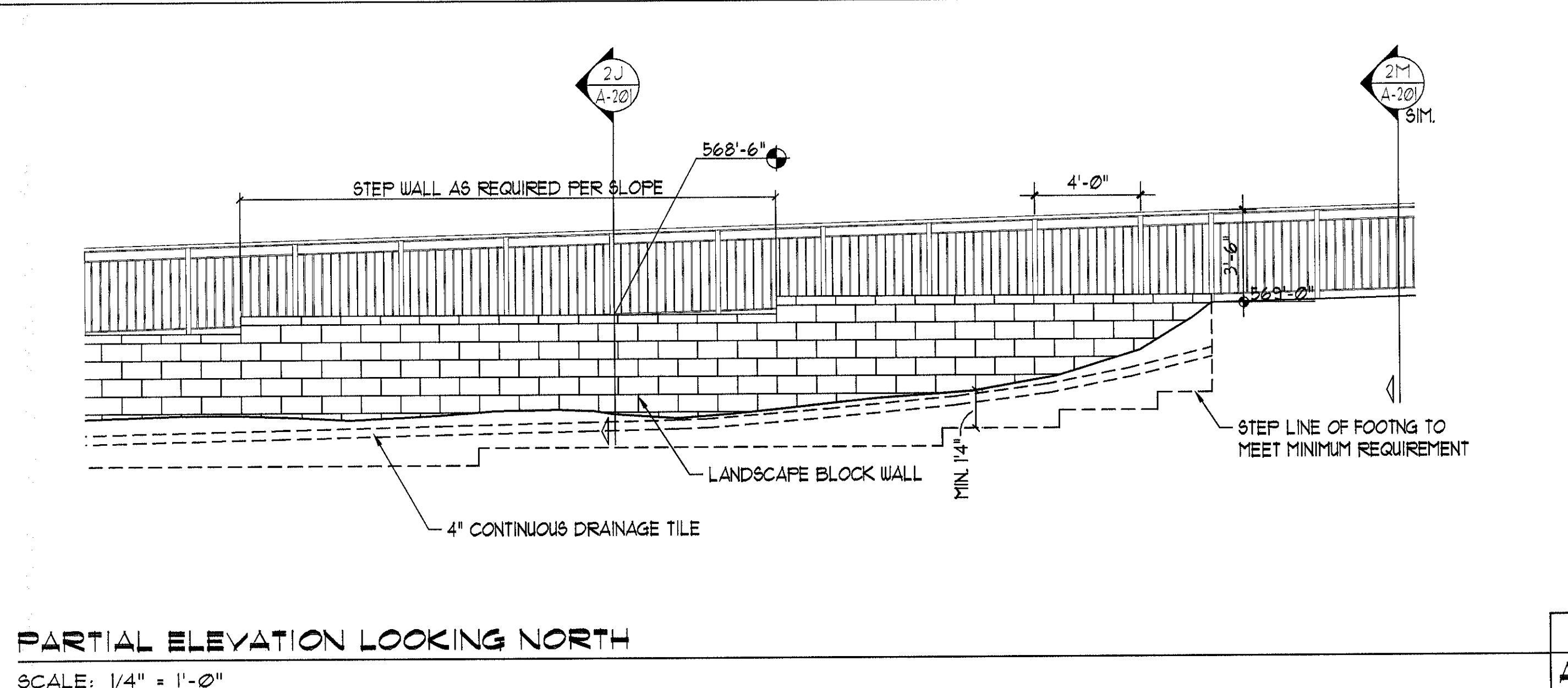
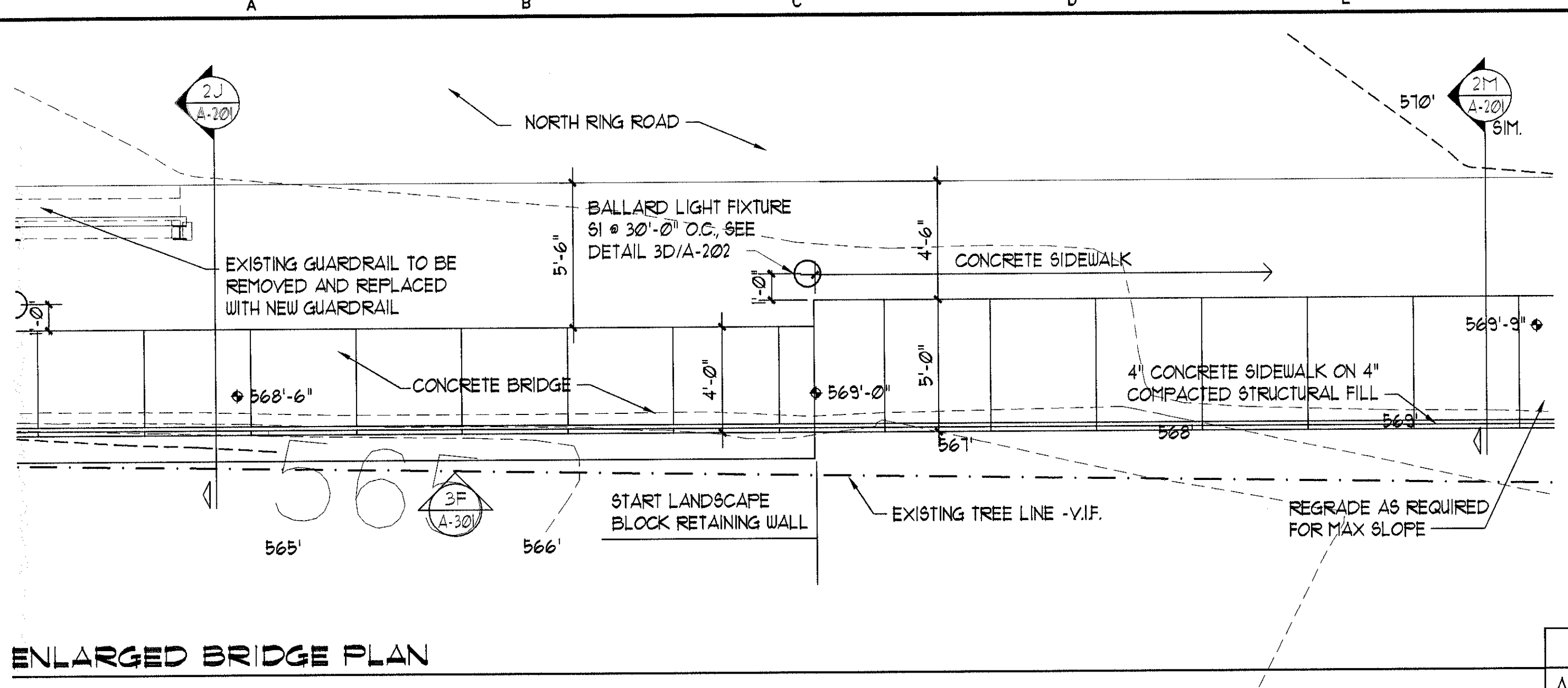
COPYRIGHT © 2002 BY BLDD ARCHITECTS, INC.  
All rights reserved. No part of this document may be reproduced or transmitted in any form or by any means, electronic or mechanical, including photocopying, recording, or by any information storage and retrieval system, without the written permission of the author, except where permitted by law.

**BRIDGE PLAN AND ELEVATION**  
**JOLIET JUNIOR COLLEGE**  
**JOLIET, IL**

sheet

**A-101**

project 042030.400

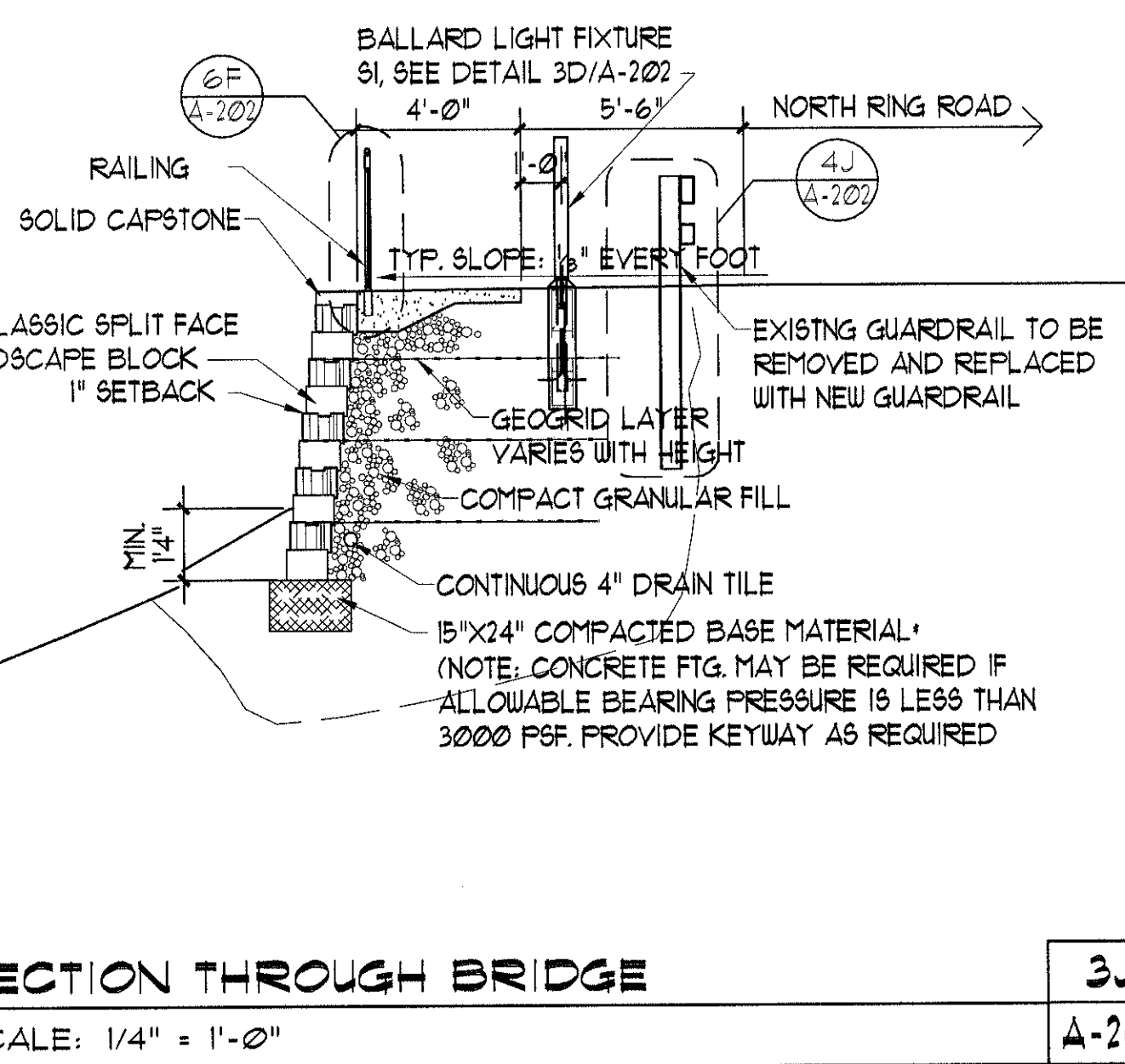
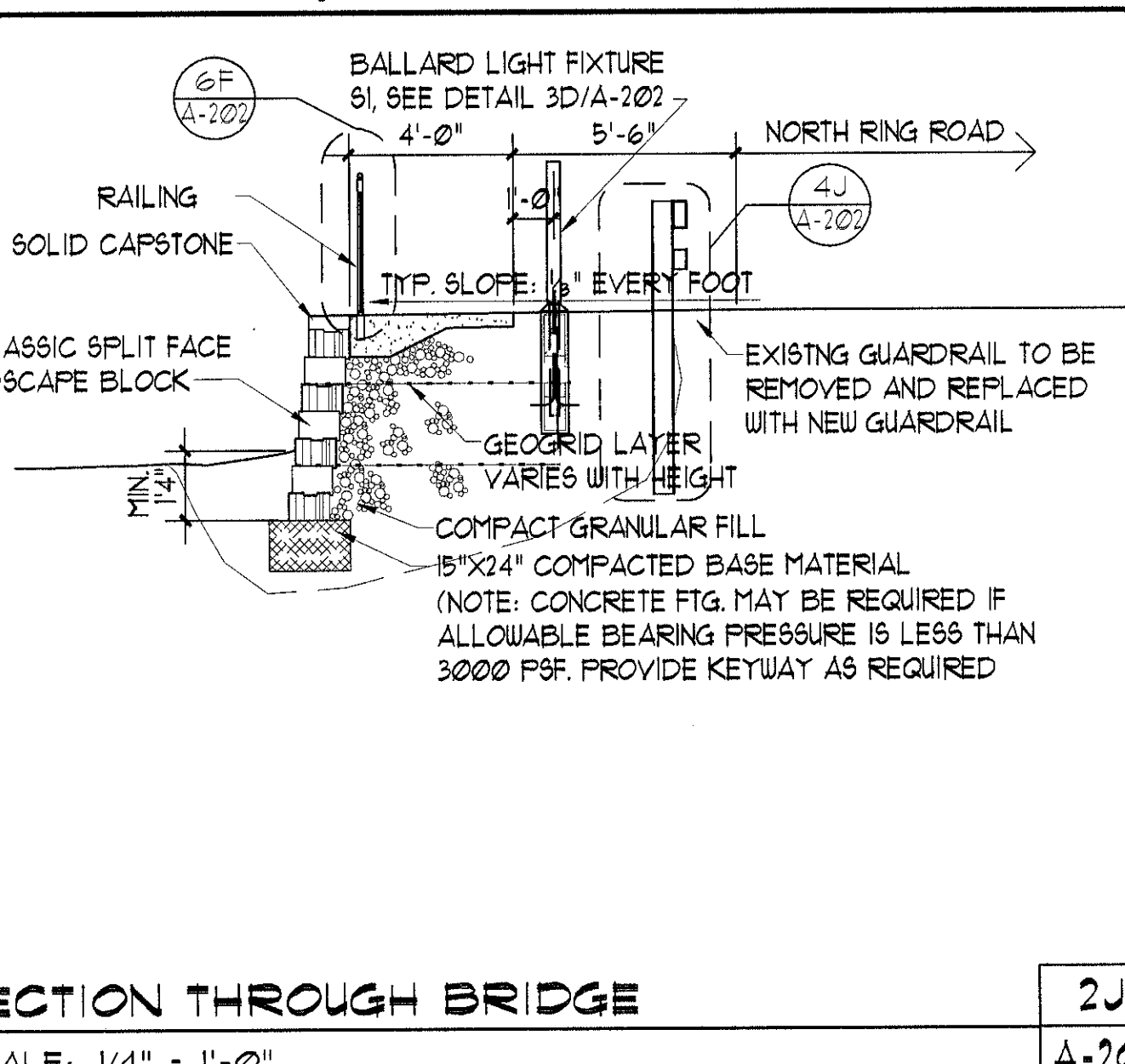


**GENERAL NOTES**

- CONTRACTOR TO FIELD LOCATE ALL UTILITIES BEFORE STARTING CONSTRUCTION.
- AFTER EXCAVATION IS COMPLETE TO BOTTOM OF GRAVEL BASE AND BEFORE INSTALLING THE GRAVEL BASE THE CONTRACTOR SHALL CONTACT THE OWNER'S REPRESENTATIVE TO CHECK THE STRENGTH OF THE SOIL. THE MINIMUM UNCONFINED COMPRESSIVE STRENGTH REQUIRED IS 1500 PSF.
- THE RETAINING WALL SYSTEM TO BE USED IS THE ROCKWOOD RETAINING WALLS, ALLAN BLOCK WALL SYSTEM, VERSA-LOK WALL SYSTEM OR APPROVED EQUAL. THE WALL SHALL BE INSTALLED IN ACCORDANCE WITH THE MANUFACTURER'S RECOMMENDATIONS AND INSTRUCTIONS AND AS SHOWN ON THE PLANS.
- BACKFILL MATERIAL SHALL BE AS RECOMMENDED BY THE MANUFACTURER AND AS SHOWN ON BLOCK WALL TYPICAL SECTION. PLACEMENT OF FILL SHALL ALSO BE AS RECOMMENDED BY THE MANUFACTURER.
- THE FILTER FABRIC REQUIRED AROUND THE 4 INCH PERFORATED DRAIN TILE SHALL MEET THE REQUIREMENTS OF SECTION 1090.05 OF THE STANDARD SPECIFICATIONS FOR ROAD AND BRIDGE CONSTRUCTION IN ILLINOIS ADOPTED JANUARY 1, 1997.
- ALL WORK SHALL BE PERFORMED IN ACCORDANCE WITH THE STANDARD SPECIFICATIONS FOR ROAD AND BRIDGE CONSTRUCTION IN ILLINOIS ADOPTED JANUARY 1, 1997.
- THE CONTRACTOR SHALL TAKE ALL PRECAUTIONS NECESSARY TO PROTECT THE STRUCTURES FROM ANY DAMAGE DUE TO THE CONSTRUCTION OPERATION. ANY ITEMS DAMAGED BY THE CONTRACTOR SHALL BE REPAIRED BY THE CONTRACTOR AT THE CONTRACTOR'S EXPENSE TO THE SATISFACTION OF THE OWNER.
- THE CONTRACTOR SHALL INSTALL A GRAVEL BASE UNDER THE RETAINING WALL AS SHOWN ON THE PLANS AND IN ACCORDANCE WITH THE MANUFACTURER'S INSTRUCTIONS.
- ANY SOIL MATERIAL NOT USED IS TO BE REMOVED FROM THE SITE.

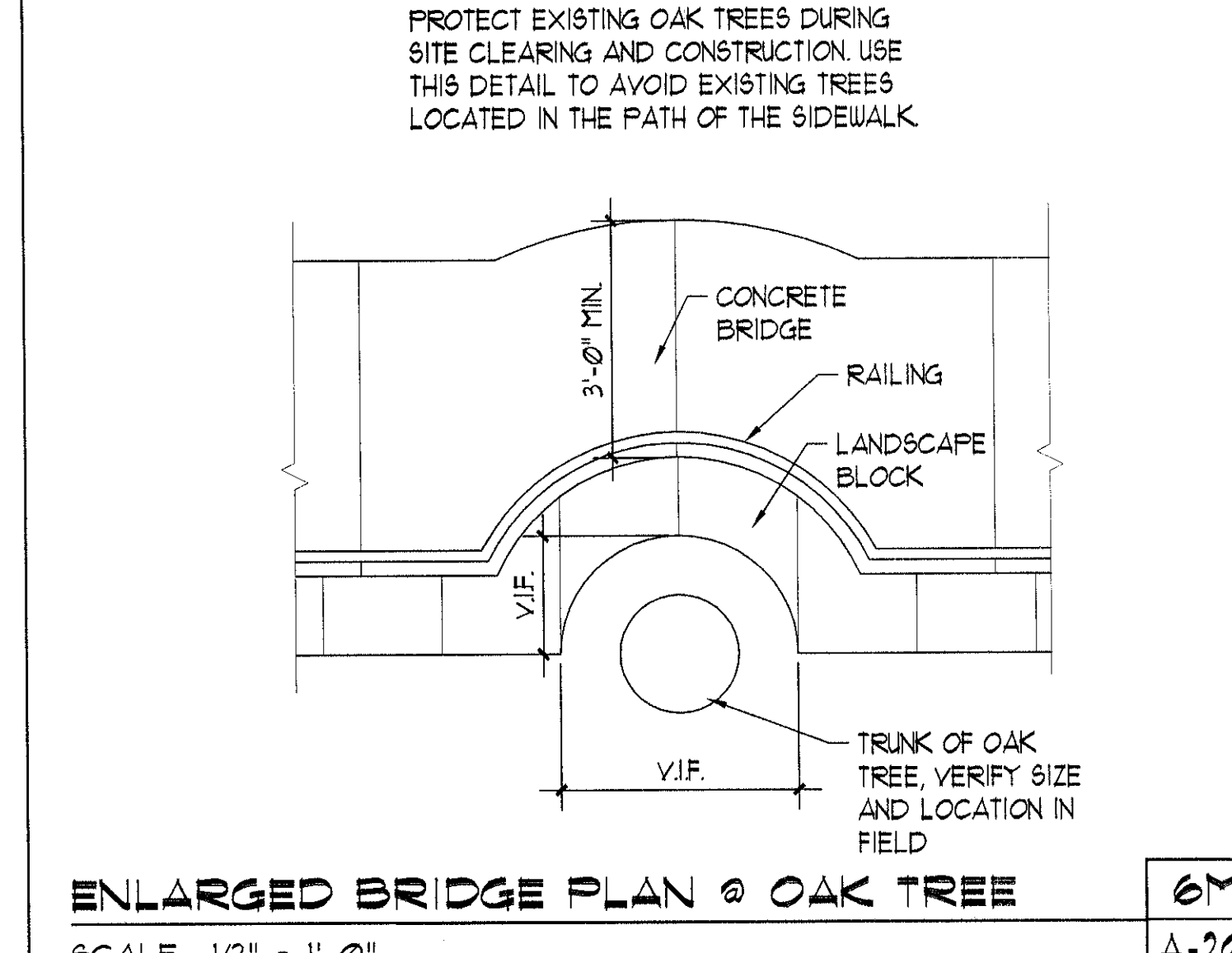
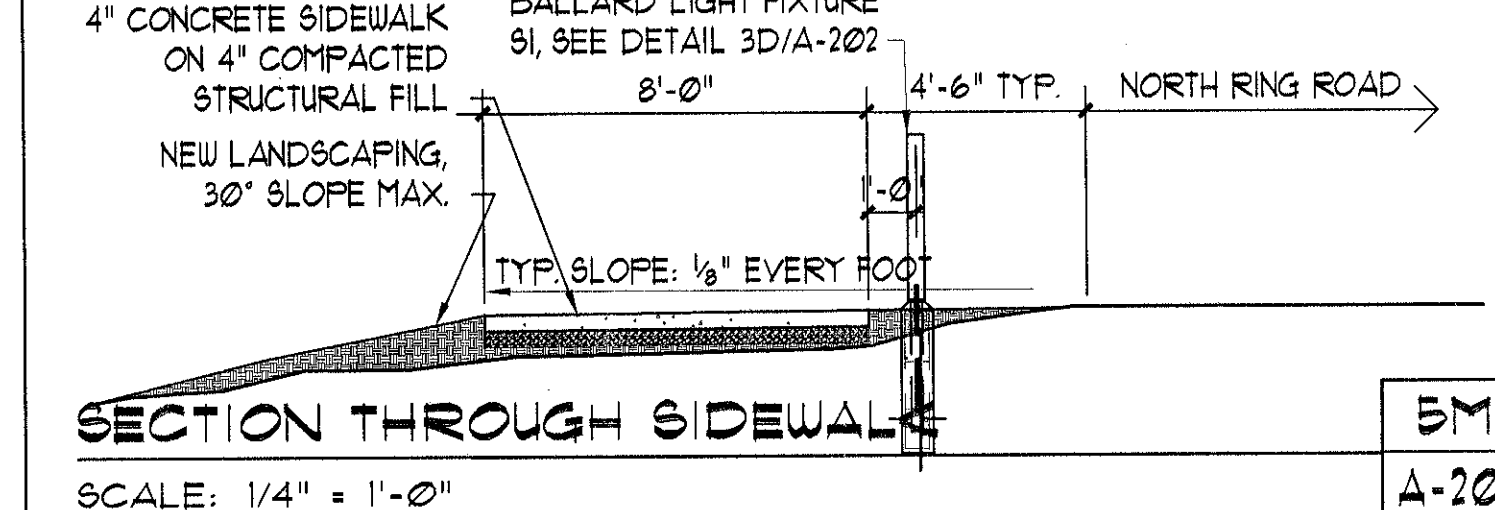
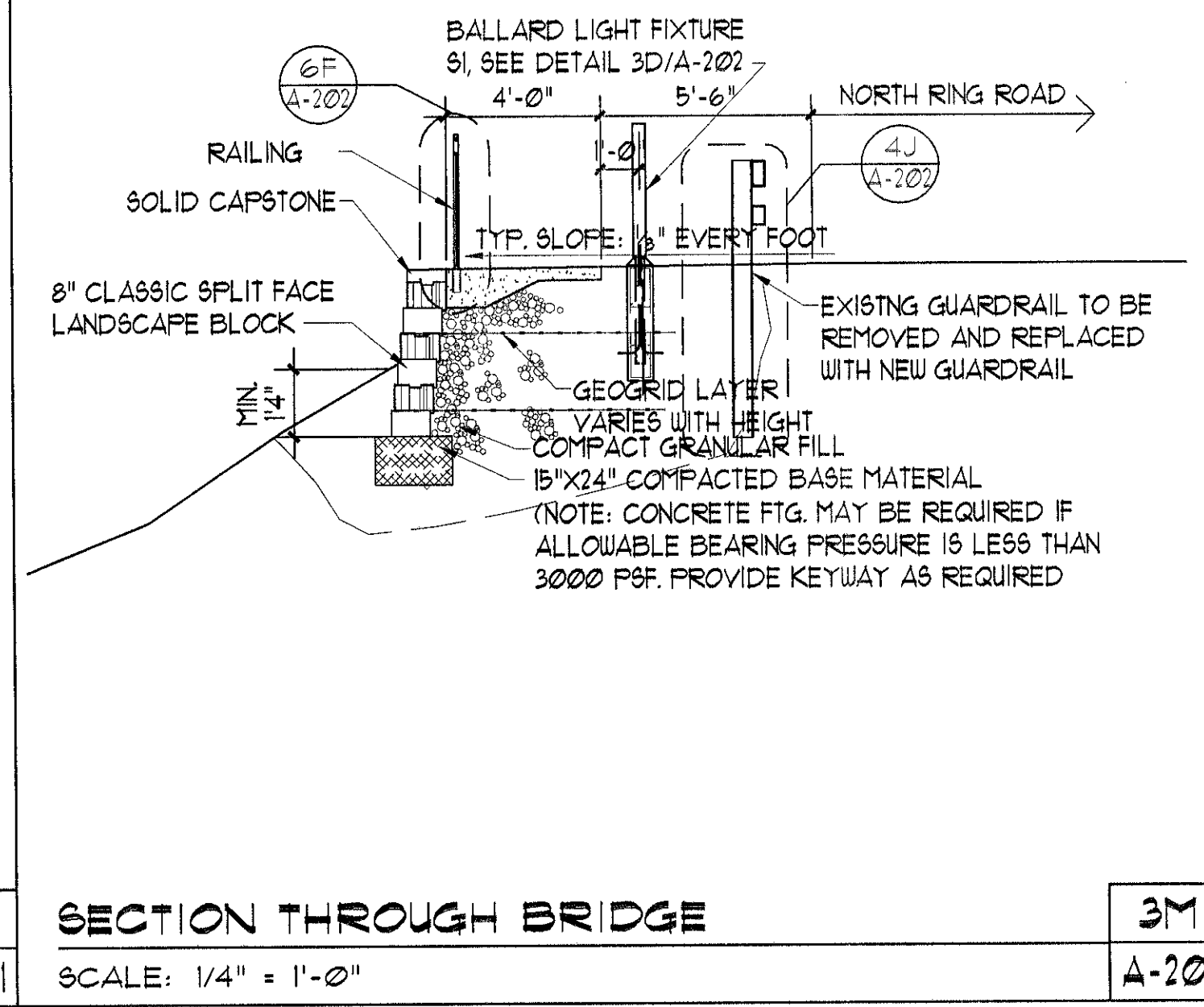
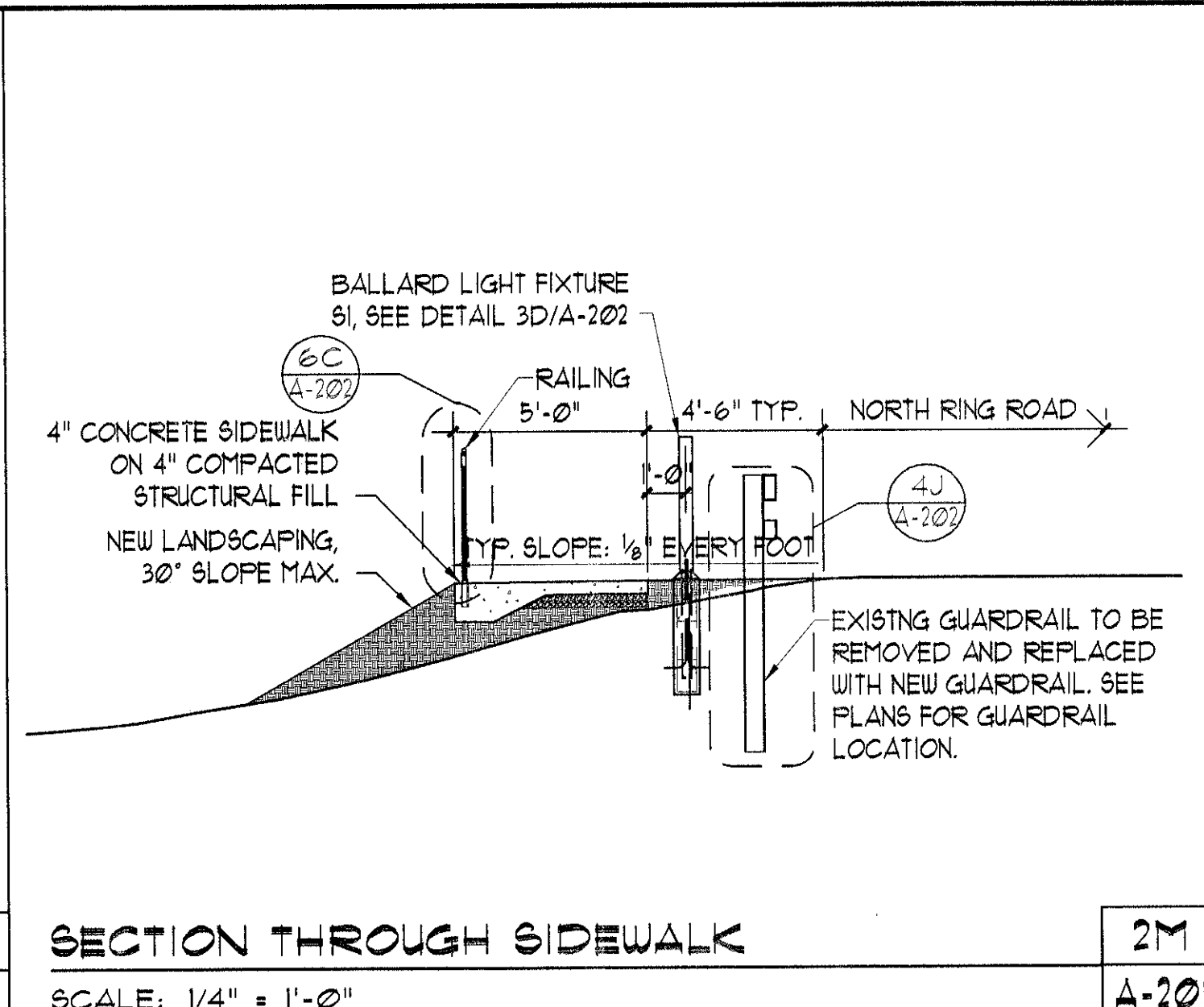
**STRUCTURAL NOTES**

1. CODES:
- |      |   |
|------|---|
| BOCA | NATIONAL BUILDING CODE, 2003                    |
| ACI  | AMERICAN CONCRETE INSTITUTE                     |
| AISC | AMERICAN INSTITUTE OF STEEL CONSTRUCTION (AISC) |
| AWS  | AMERICAN WELDING SOCIETY                        |
2. DIMENSIONS ON ARCHITECTURAL DRAWINGS ARE TO BE CHECKED AGAINST FIELD CONDITIONS BY CONTRACTORS.
3. UNLESS NOTED OTHERWISE, DETAILS, SECTIONS, AND NOTES ON THE DRAWINGS ARE INTENDED TO BE TYPICAL FOR SIMILAR CONDITIONS.
- FOUNDATIONS**
- ALL SOIL SUPPORTED STRUCTURES SHALL BE FOUNDED UPON UNDISTURBED, NATURAL SUBGRADE WITH A MINIMUM ALLOWABLE BEARING CAPACITY OF 3000 PSF AS FIELD VERIFIED AND APPROVED BY THE OWNER'S SOIL TESTING LABORATORY.
  - THE SOIL SUBGRADE FOR ALL FOOTINGS, RETAINING WALLS, AND SLABS SHALL BE INSPECTED AND APPROVED BY THE OWNER'S TESTING LABORATORY IMMEDIATELY PRIOR TO PLACING MASONRY OR CONCRETE.
  - ALL SUBGRADES SHALL BE COMPACTED TO 95 PERCENT OF STANDARD PROCTOR (ASTM D698) MAXIMUM DENSITY AT OPTIMUM MOISTURE CONTENT, AS REQUIRED.
  - ALL ORGANIC AND/OR OTHER UNSUITABLE MATERIALS SHALL BE REMOVED FROM SUBGRADE AND BACKFILL AREAS AND BACKFILLED WITH LEAN CONCRETE OR SELECT FILL, COMPACTED TO 98 PERCENT OF STANDARD PROCTOR (ASTM D698) MAXIMUM DENSITY AT OPTIMUM MOISTURE CONTENT.
  - NO FOOTINGS, RETAINING WALLS, OR SLABS SHALL BE PLACED ONTO OR AGAINST SUBGRADE CONTAINING FREE WATER, FROST OR ICE.
  - THE CONTRACTOR SHALL PROVIDE ALL NECESSARY MEASURES TO PREVENT ANY FROST OR ICE FROM PENETRATING ANY FOOTING, RETAINING WALL, OR SLAB SUBGRADE BEFORE AND AFTER PLACING OF CONCRETE UNTIL SUCH SUBGRADES ARE FULLY PROTECTED BY THE PERMANENT BUILDING STRUCTURE.



**STRUCTURAL NOTES**

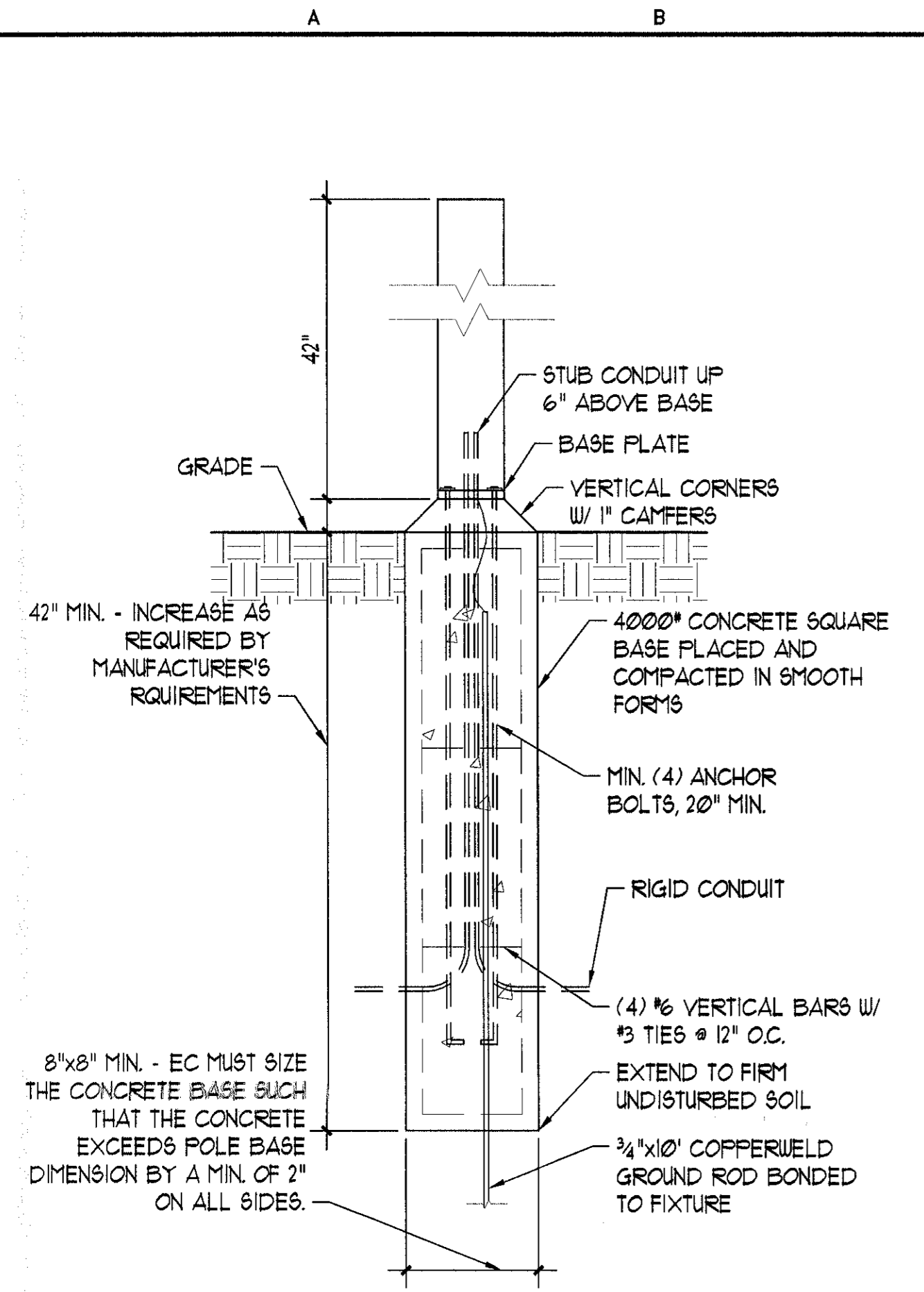
- CONCRETE**
- UNLESS NOTED OTHERWISE, CONCRETE SHALL BE NORMAL WEIGHT CONCRETE AND SHALL DEVELOP 4000 PSI MINIMUM COMPRESSIVE STRENGTH IN 28 DAYS.
  - SLABS ON GRADE SHALL BE 4" THICK NORMAL WEIGHT CONCRETE REINFORCED WITH WWF. 6x6-W2.9xW2.9.
  - CONTROL JOINTS SHALL BE CUT WITHIN 24 HOURS AFTER THE CONCRETE HAS SET. SEE PLAN FOR CONTROL AND EXPANSION JOINT LOCATIONS.
- REINFORCEMENT**
- REINFORCEMENT SHALL CONFORM TO ASTM SPECIFICATION A615, GRADE 60. REINFORCEMENT TO BE WELDED SHALL CONFORM TO ASTM SPECIFICATION A706, GRADE 60.
  - THE CONCRETE COVER PROVIDED FOR ALL REINFORCEMENT SHALL COMPLY WITH ACI 318, LATEST ADDITION. THE FOLLOWING CONCRETE COVER SHALL BE PROVIDED FOR REINFORCEMENT UNLESS NOTED OTHERWISE:
- COVER (INCHES)**
- |  |       |
|--|-------|
| CONCRETE CAST AGAINST AND PERMANENTLY EXPOSED TO EARTH:    | 3     |
| CONCRETE EXPOSED TO EARTH OR WEATHER:                      | 1 1/2 |
| CONCRETE NOT EXPOSED TO WEATHER OR IN CONTACT WITH GROUND: |       |
| SLABS  | 3/4   |
| NO. II BAR AND SMALLER                                     |       |
- PROVIDE ALL ACCESSORIES NECESSARY TO SUPPORT REINFORCEMENT AT THE POSITIONS INDICATED. PLASTIC COATED OR STAINLESS STEEL ACCESSORIES SHALL BE USED IN ALL EXPOSED CONCRETE WORK.
  - ALL EMBEDMENT LENGTHS AND LAPS SHALL BE AS REQUIRED BY ACI 318.



date 03/01/05  
revised  
drawn by AMF/MRD  
checked by RCD

**BLDD ARCHITECTS**  
BLDD Architects, Inc.  
115 W. Jefferson, Suite 103  
Bloomington, Illinois 61701  
Phone: 309-828-5025  
Fax: 309-828-5127  
Design Firm Registration #184-000728  
COPYRIGHT © 2002 BY BLDD ARCHITECTS, INC. All rights reserved. No part of this document may be reproduced or transmitted in any form or by any means, electronic or mechanical, including photocopying, recording, or by any information storage and retrieval system, without the written permission of the author, except where permitted by law.

ENLARGED BRIDGE PLANS,  
SECTIONS AND DETAILS  
**JOLIET JUNIOR COLLEGE**  
JOLIET, IL  
sheet  
**A-201**  
project 042030.400

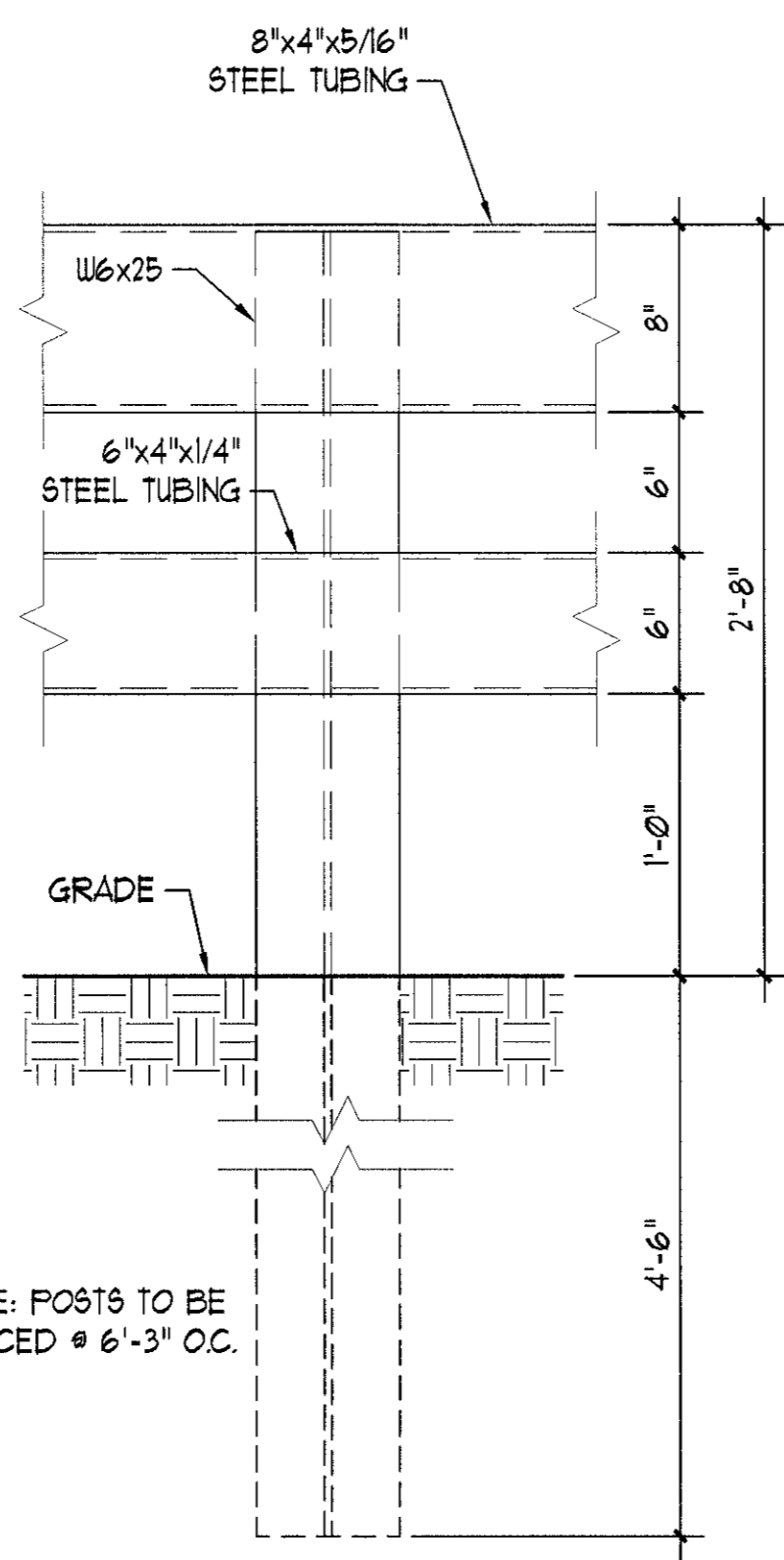


**BASE DETAIL FOR BALLARD LIGHT FIXTURE 6I**

SCALE: 1 1/2" = 1'-0"

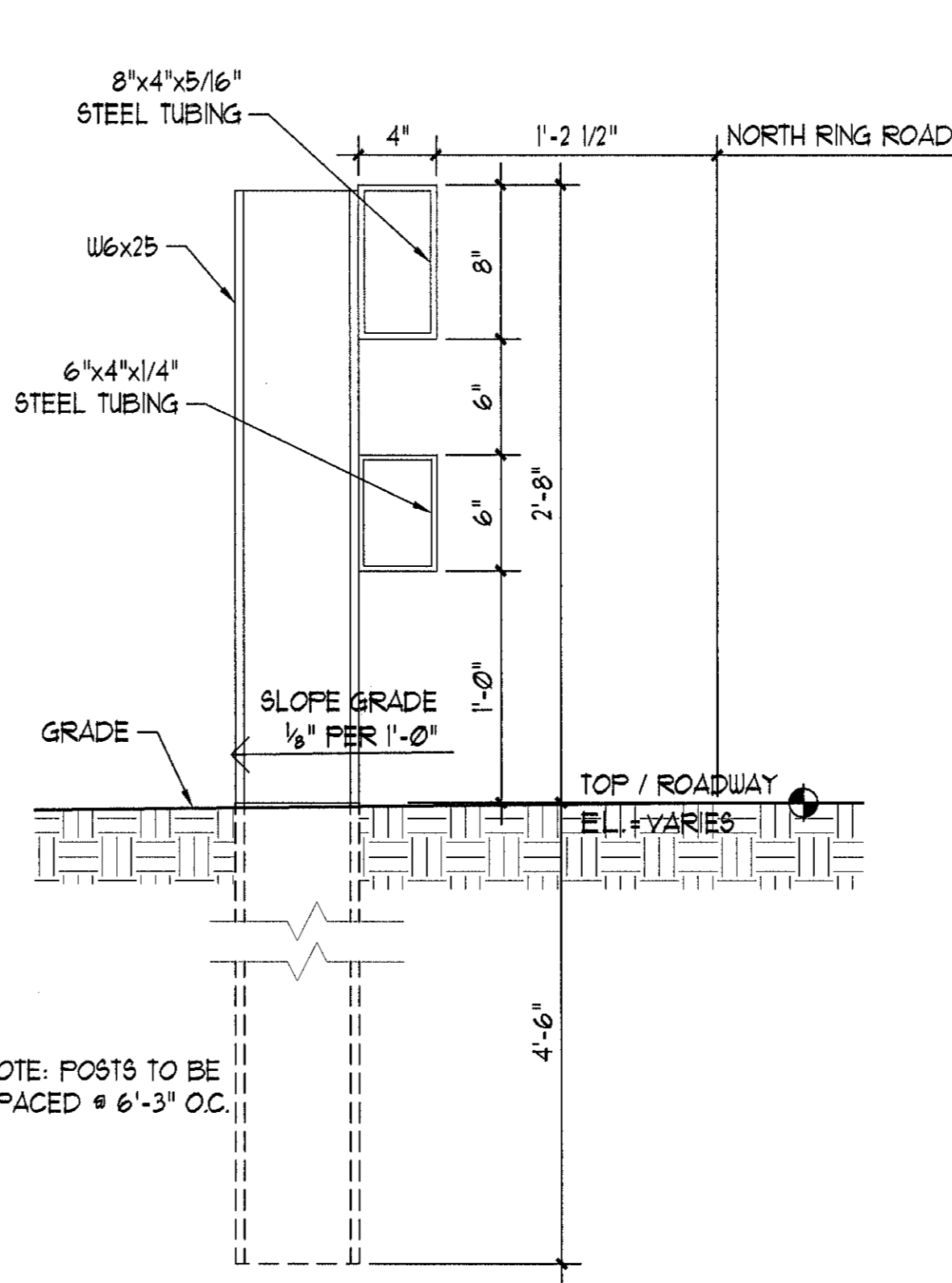
**3D GUARDRAIL ELEVATION**

SCALE: 1 1/2" = 1'-0"



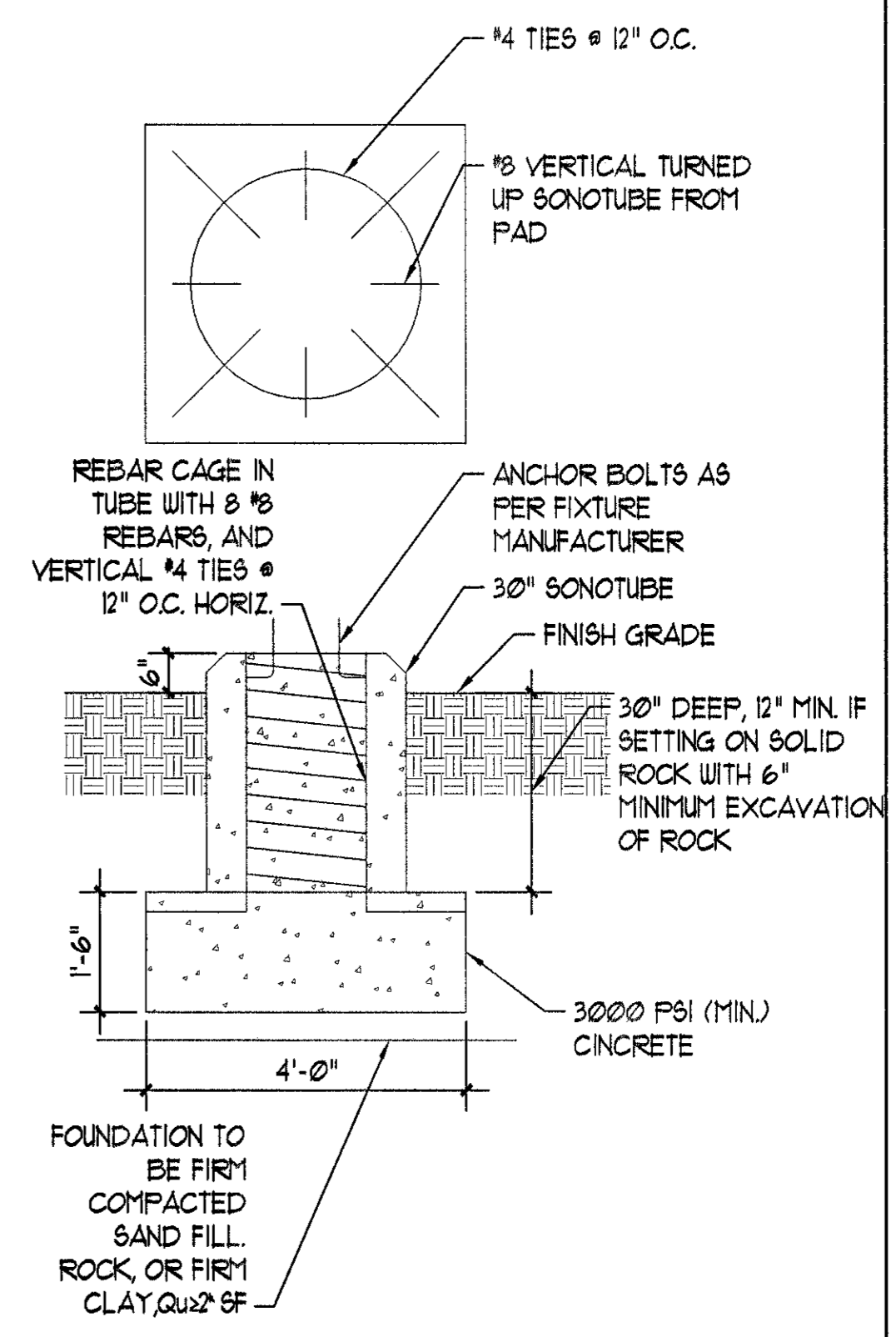
**4F GUARDRAIL SECTION**

SCALE: 1 1/2" = 1'-0"



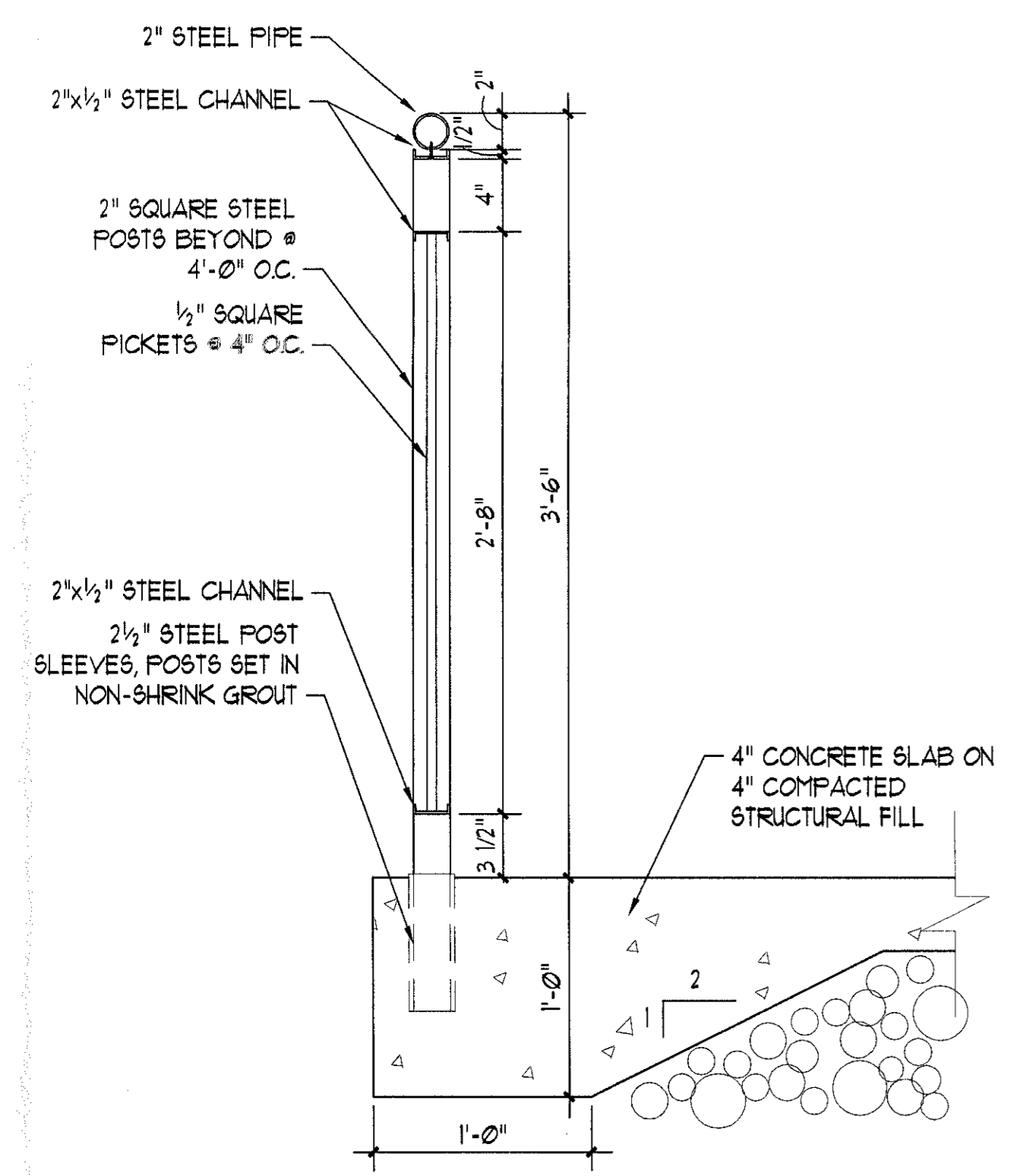
**SPREAD FOOTING POLE BASE FOUNDATION DETAIL**

SCALE: 1/2" = 1'-0"



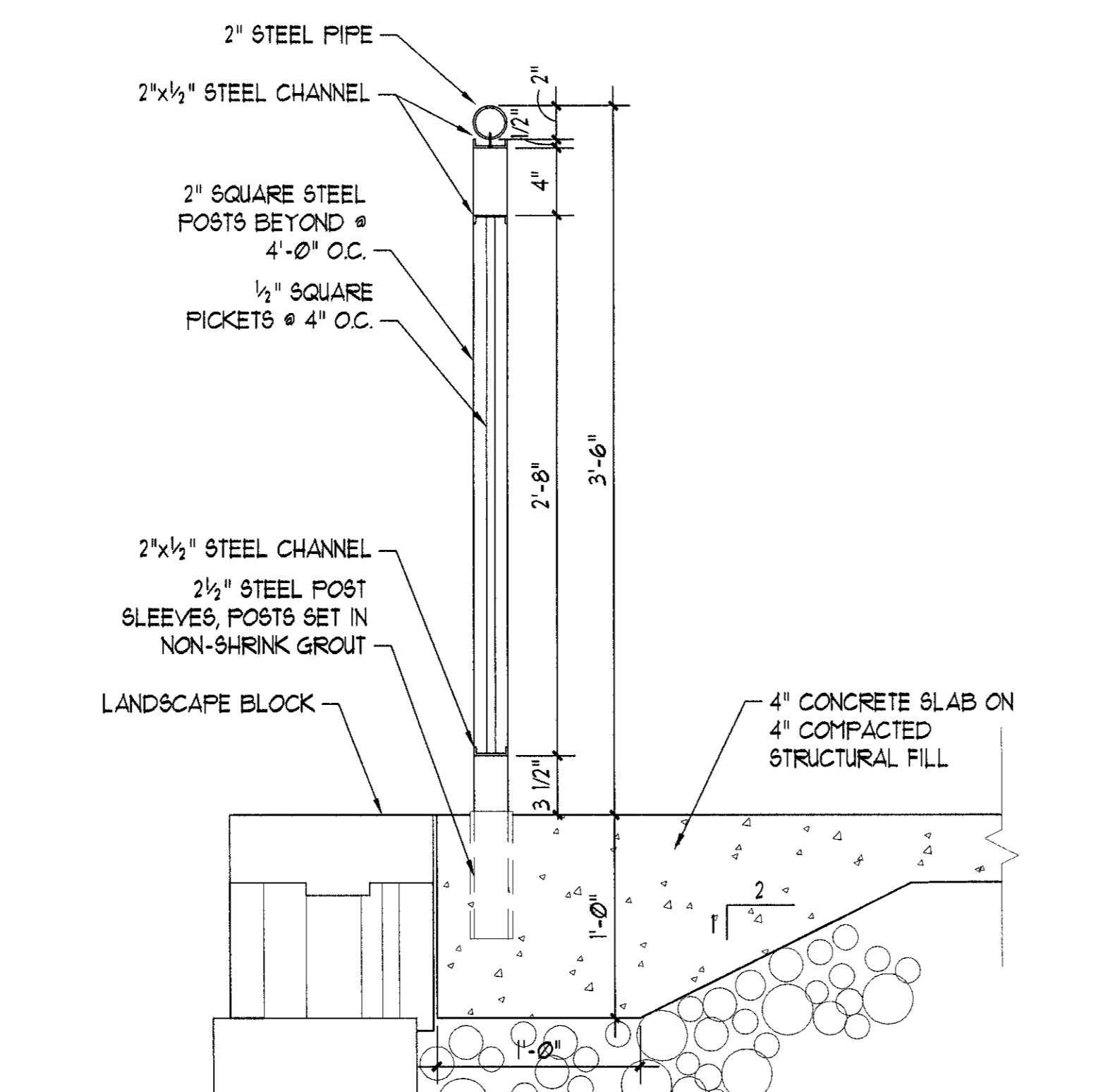
**4M**

SCALE: 1/2" = 1'-0"



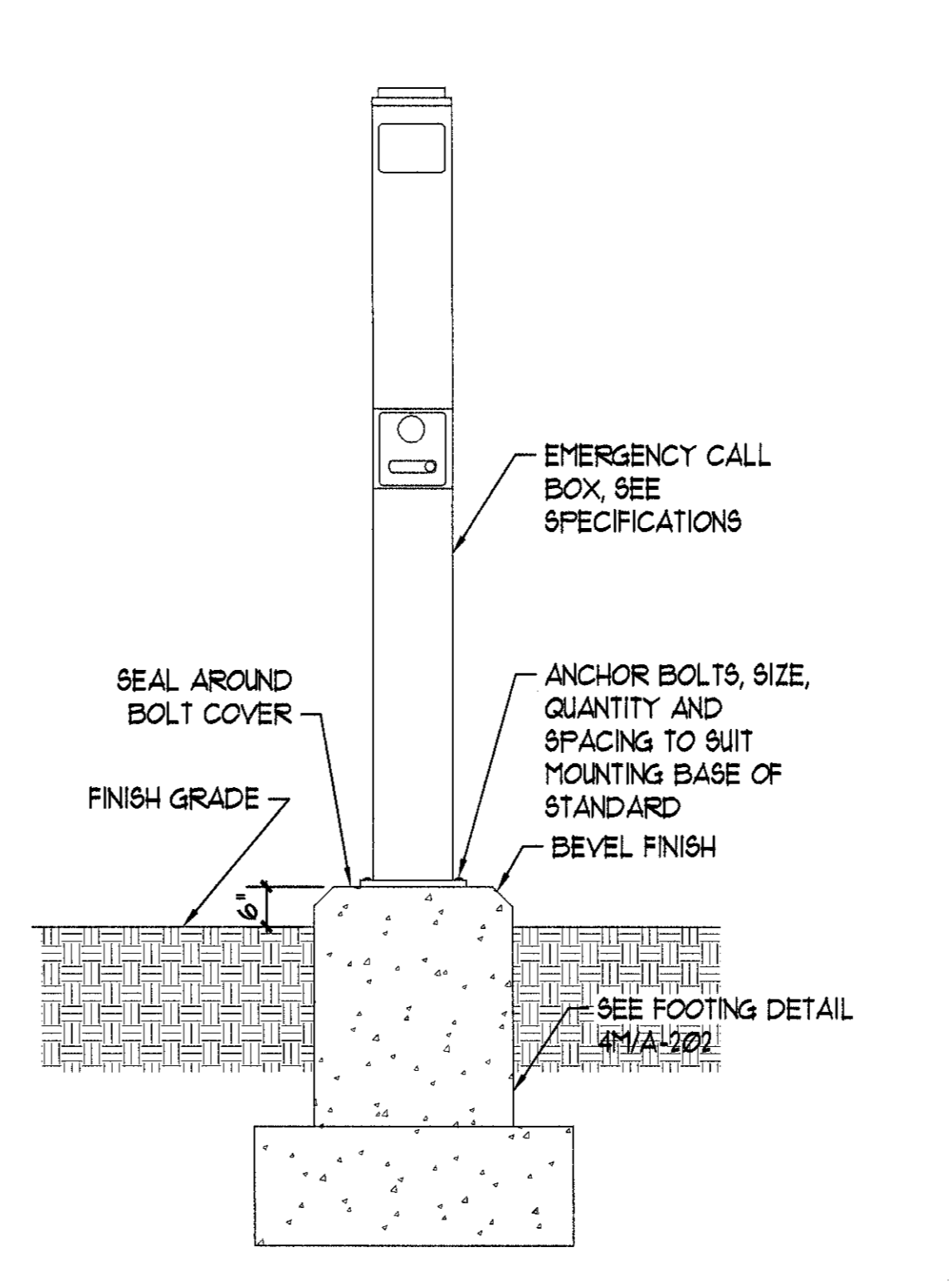
**RAILING A DETAIL**

SCALE: 1 1/2" = 1'-0"



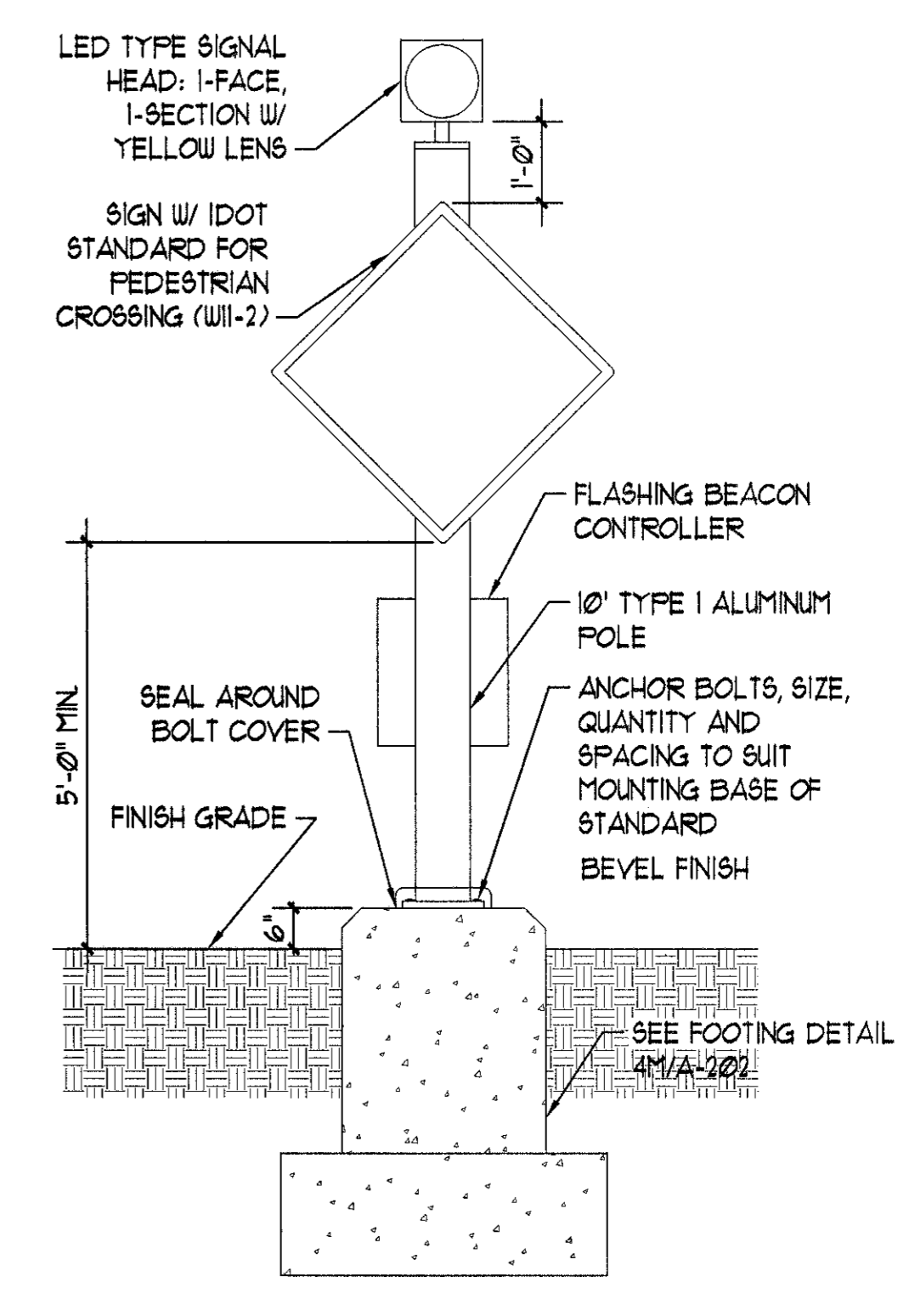
**6C RAILING B DETAIL**

SCALE: 1 1/2" = 1'-0"



**6F EMERGENCY CALL BOX DETAIL**

SCALE: 1/2" = 1'-0"



**6J PEDESTRIAN WARNING LIGHT F1 DETAIL**

SCALE: 1/2" = 1'-0"

date 03/01/05  
revised

drawn by MRD  
checked by RCD

**BLDD**

**ARCHITECTS**

BLDD Architects, Inc.  
115 W. Jefferson, Suite 103  
Bloomington, Illinois 61701  
Phone: 309-828-5025  
Fax: 309-828-5127

Design Firm  
Registration  
#184-000723  
COPYRIGHT © 2002 BY BLDD ARCHITECTS, INC.  
All rights reserved. No part of this document may be reproduced  
without the express written permission of the architect or manufacturer.  
including photocopying, recording, or by any information storage and  
retrieval system, without the written permission of the architect or  
manufacturer by law.

**DETAILS**  
**JOLIET JUNIOR COLLEGE**  
**JOLIET, IL**

sheet

**A-202**

project 042030.400